

Louisiana Summit for Deaf Education Reform

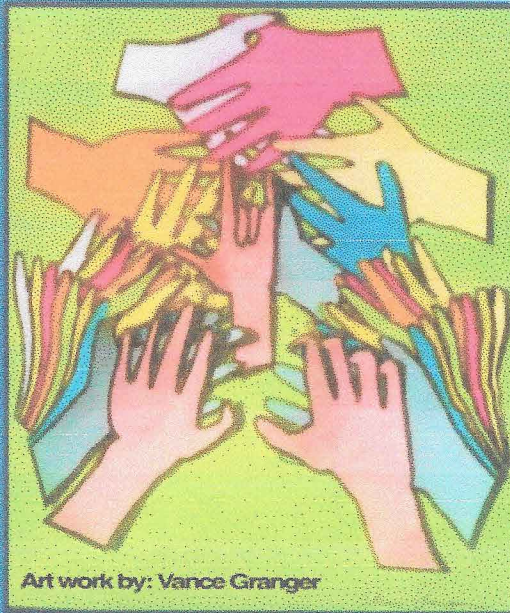
Saturday January 24 - 8:30 am – 4:00 pm

West Baton Rouge Convention Center
2750 N. Westport Dr. Port Allen, LA 70767

Deaf
Education
Alliance

Support = Access

High Quality Resources
High Quality Supports
High Quality Communication
High Quality Education



Art work by: Vance Granger

Raise your hands!
Raise the bar!
Together, we can do it!

A project of:
I-LEEAD.org



Coming together to strengthen our connection and support better educational opportunities for all children including Deaf, Deaf-Blind and Hard of Hearing.

Parents, teachers, support staff, audiologists, speech therapists, counselors, interpreters, service coordinators, policymakers, and any other community members are invited to attend.



Conference Keynote Presenter: Beth Benedict, Ph.D., is a professor with the Department of Communication Studies at Gallaudet University. She is the coordinator of Gallaudet's Deaf and Hard of Hearing Infants, Toddlers and Families: Collaboration and Leadership Interdisciplinary Graduate Certificate Program. Dr. Benedict also currently serves as chair of the Joint Committee on Infant Hearing representing the Council on Education of the Deaf, and is the President of the American Society for Deaf Children.

Conference Presentations:

Early Intervention

When Deaf Kids Thrive - Emotional Integration - Behavior

Students' Rights and Effective Parent Advocacy

Services available through the Louisiana School for the Deaf

Hands and Voices: Parent Support

Registration through January 8th:
\$50.00 (includes breakfast/lunch)

After January 8th : \$75

Register at www.ILEEAD.org

Families: \$50 for first adult and \$20 per each additional person.

Presented by the Deaf Education Alliance and I-LEEAD.

For More Information visit www.ILEEAD.org or call 225 319 5586 or VP 225 341 6398